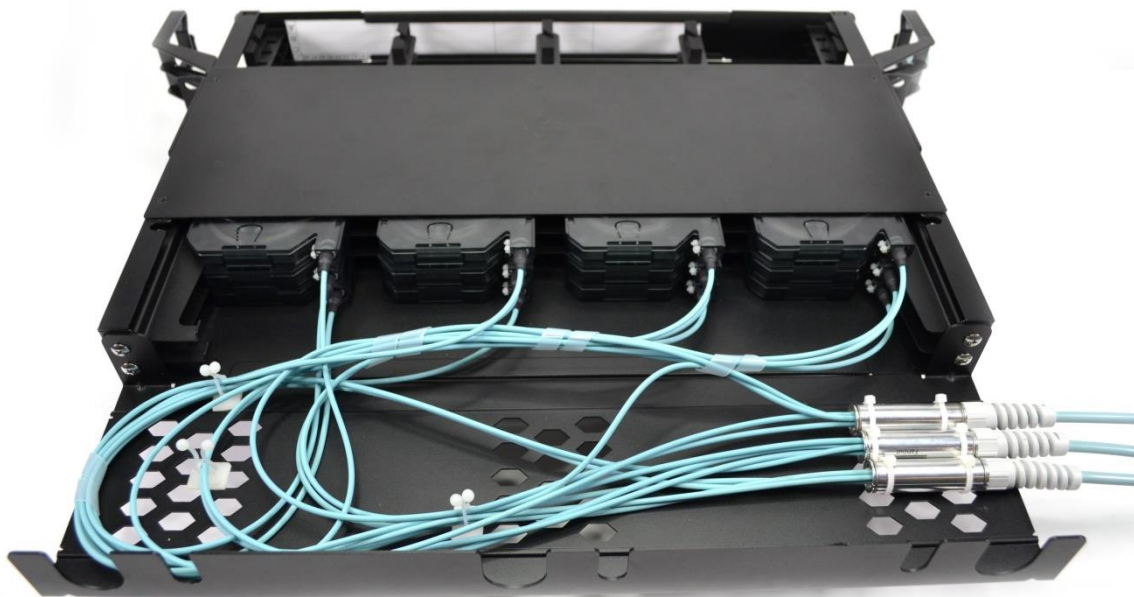


## LC single-fibre trunk cable installation for VERTEX patch panel

This installation guide describes the method of installing LC trunk cable (N x LC) into the SYLEX VERTEX panel system.



### Contents:

1. Assembly and installation of LC patching modules into 1U 19" VERTEX panel
2. 144x LC trunk cable installation into 1U VERTEX panel – patching version

## Installation Guide IG-FOI-010

### 1. Assembly and installation of LC patching modules into 1U 19" VERTEX panel

Unpack the 1U HD patch panel and the accessories (saddles, back management plate and screws) from the packaging.

Mount the saddles on the left and right side of the patch panel.

Tools and materials used:

1x Screwdriver

4x Screw M3 x 4mm

4x Washer



## Installation Guide IG-FOI-010

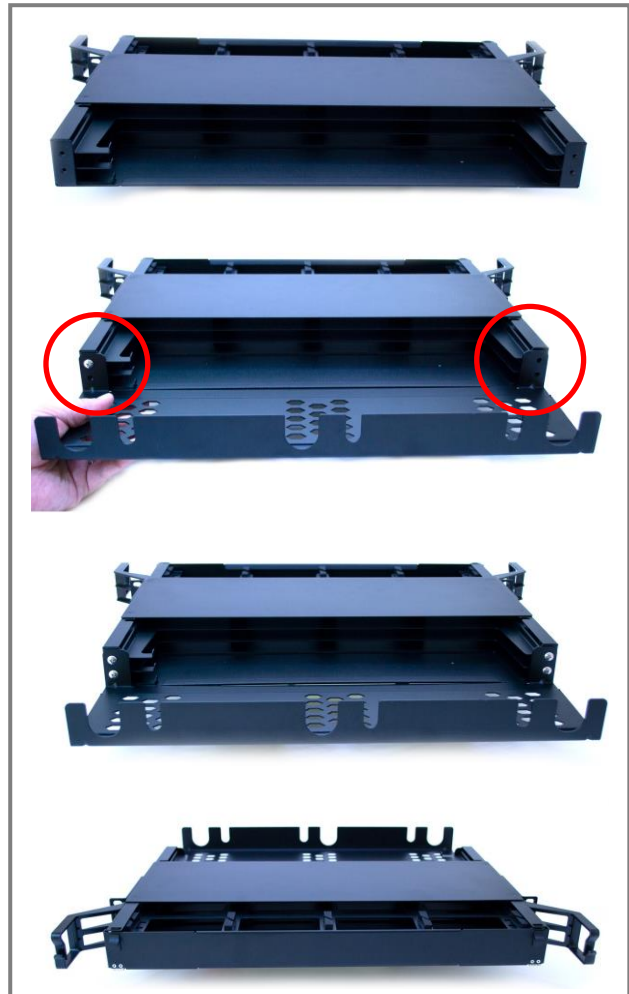
Turn the patch panel to the back side.

Mount the rear management plate.

Tools and materials used:

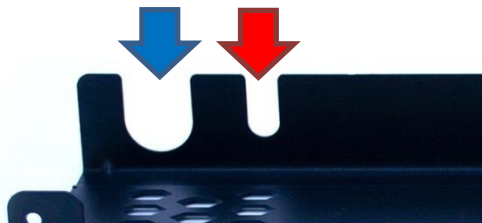
1x Screwdriver

4x Screw M4x7mm



### Additional panel information:

There is a cut-out for cable entry on both sides of the panel. Through each cut-out you can install:



Cutout	Duralino with grommet	Suitable for thread	Hole diameter
<b>1. Blue</b>	1x Duralino XL or Multi-hole cable gland	M20 / PG13 or M25	Ø25mm
<b>2. Red</b>	2x Duralino S or 1x Duralino L	M12 / PG7	Ø12mm

## Installation Guide IG-FOI-010

Open the front door of the patch panel.

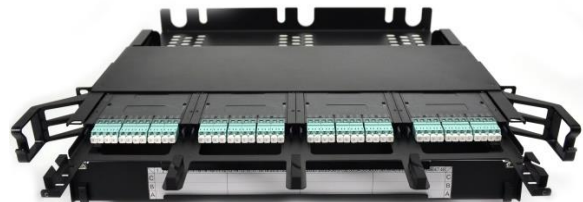
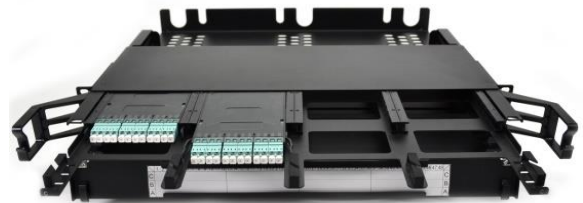
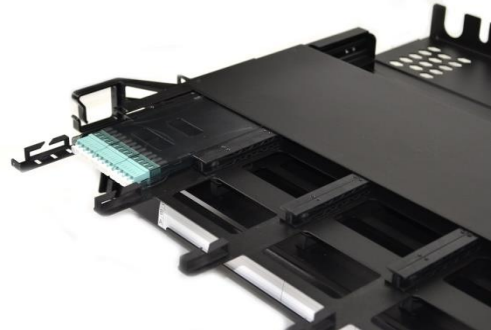
Pull out the first drawer "A" and insert the first HD patching module.

Insert the second HD patching module.

Equip the whole drawer "C" and put the drawer back inside of the patch panel.

Repeat the above-mentioned steps with drawers "B" and "A".

The panel is now ready for LC trunk backbone cable installation.



## Installation Guide IG-FOI-010

### 2. Installation of three batches of 48xLC trunk cables into 1U VERTEX panel – patching version

Prepare LC trunk cable for installation.

Place the Duralino fanout on the correct position on the rear management plate.

Affix the Duralino fanout to the rear management plate with 2 cable ties.

Cut the first and second cable ties.

The Duralino fanout is now installed.

Gather the first batch of LC connectors terminated on 900um transparent tubing and packed in a plastic bag.

Place all other LC connectors next to the patch panel.

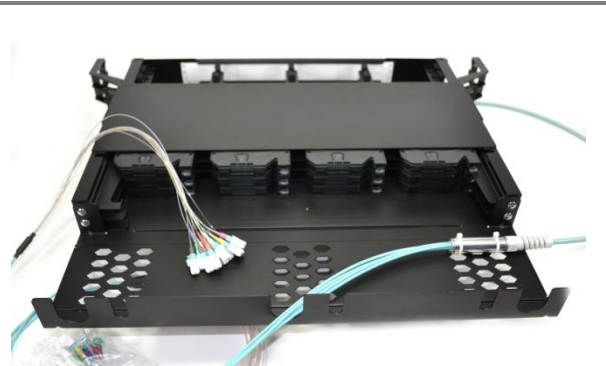


Installation Guide IG-FOI-010

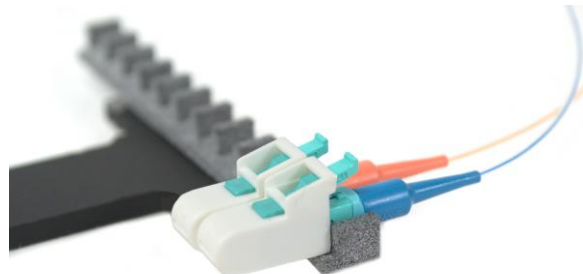
Remove the connectors from the plastic bag.

Install the 12x LC connectors onto the [RAKE](#) tool ([see detail](#)).

Turn the patch panel to the front side.



Detail



## Installation Guide IG-FOI-010

Open the front doors of the patch panel.

Take out the first drawer "C" from the patch panel.

Take out the first LC patching module from drawer "C" and put the module up to the front of the patch panel.

Put the RAKE tool with the installed LC connectors into the position from which the first LC patching module was removed (**red arrow**).

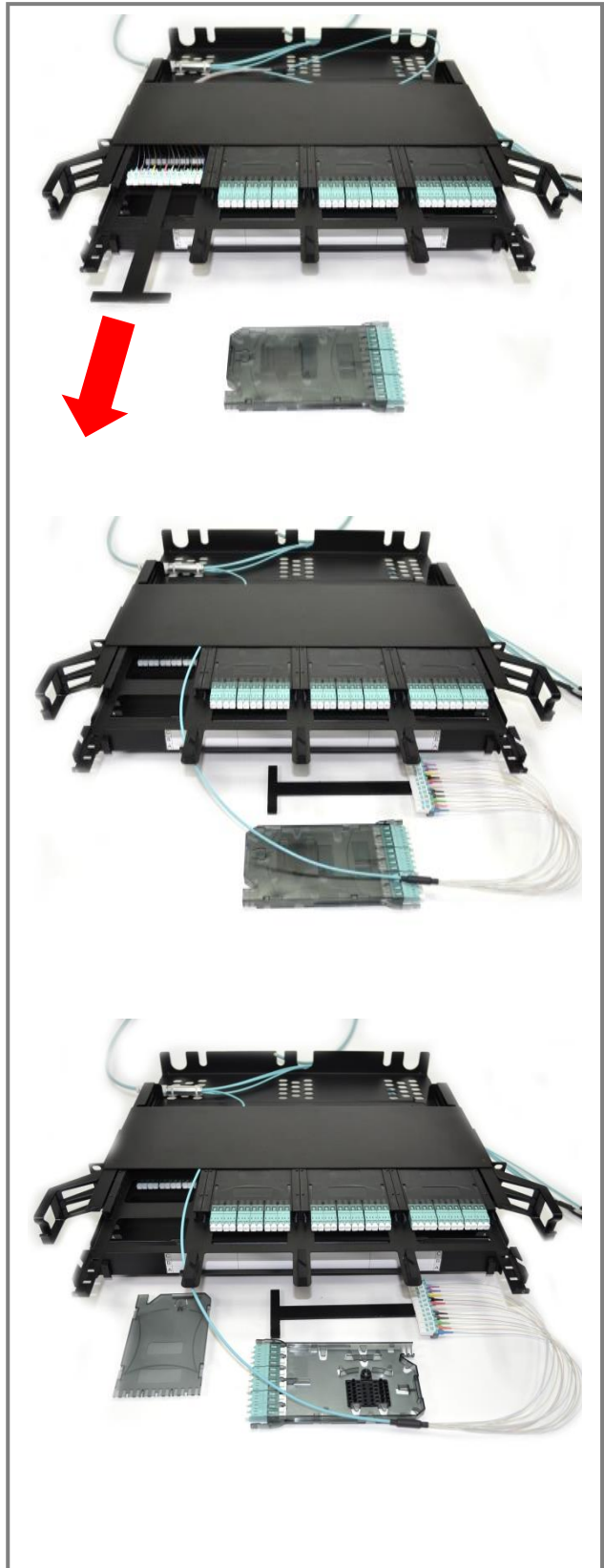
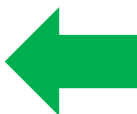


Installation Guide IG-FOI-010

Pull out the RAKE with LC connectors on the front side from the patch panel (**red arrow**).

Place the RAKE with LC connectors in front of the patch panel.

Open the LC patching module by pressing the **button** and sliding the top cover in the **direction** shown in the picture below.





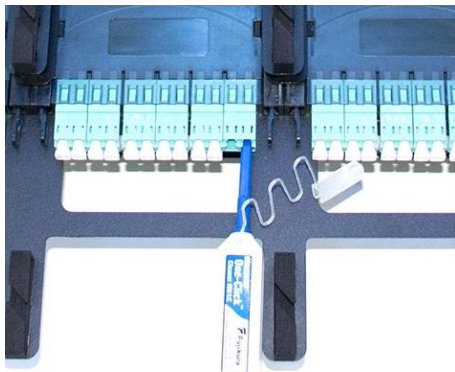
## Installation Guide IG-FOI-010

Prepare the cleaning tool and the lint-free wipes.

Remove the dust cap from the inside of the LC duplex adaptor and clean the LC duplex adaptor with the cleaning tool (see **detail** below).

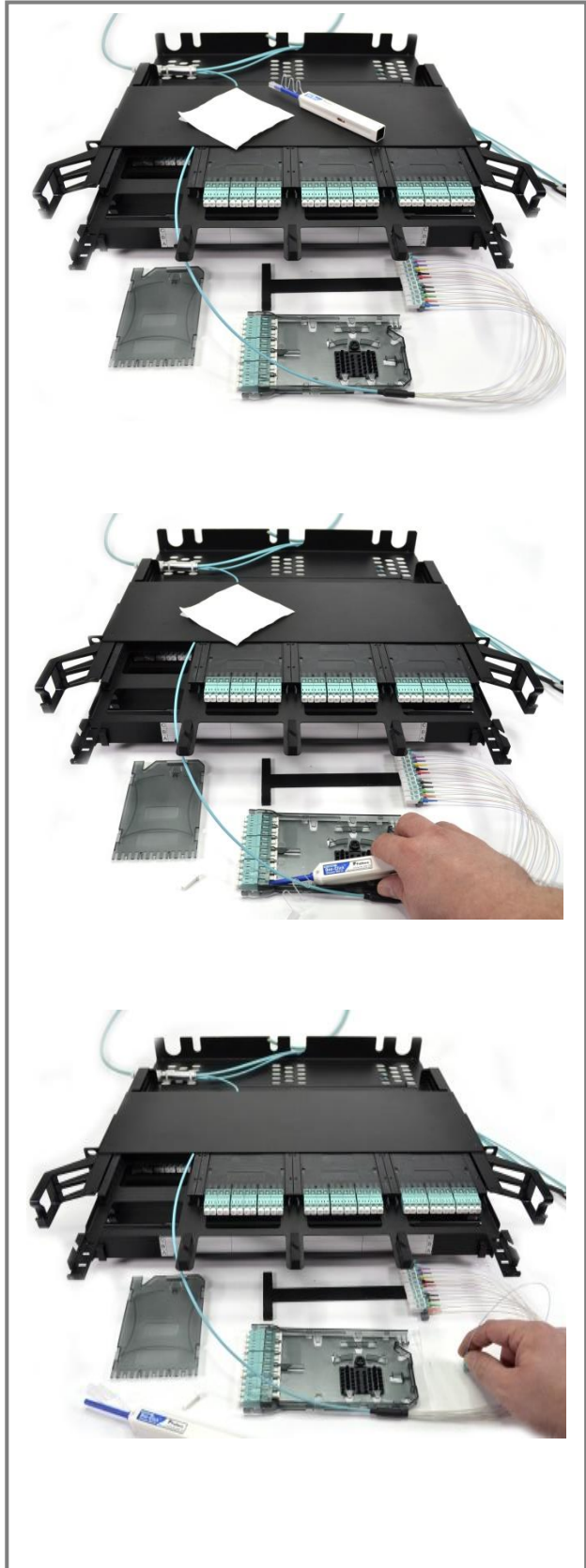
*Note: Read Installation guide IG-FOI-000 Optical Connector cleaning procedure*

### Detail



Take out the LC 900um connectors from the RAKE tool and clean them on the lint-free wipes.

*Note: Read Installation guide IG-FOI-000 Optical Connector cleaning procedure*

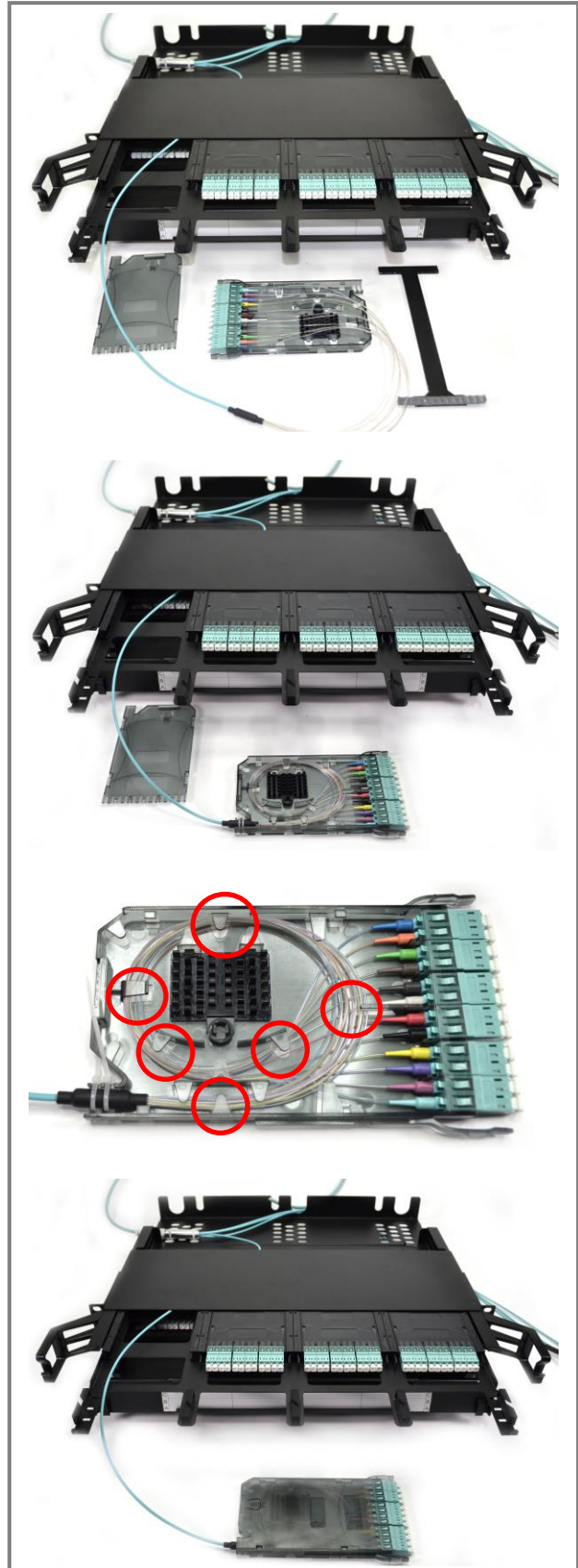


## Installation Guide IG-FOI-010

Plug the LC 900um connectors into the LC duplex adaptors.

Coil the strands of 900um tubing and affix them to the correct positions (**red circles**) in the LC patching module.

Close the LC patching module and put the first module back into its position in drawer "C".



## Installation Guide IG-FOI-010

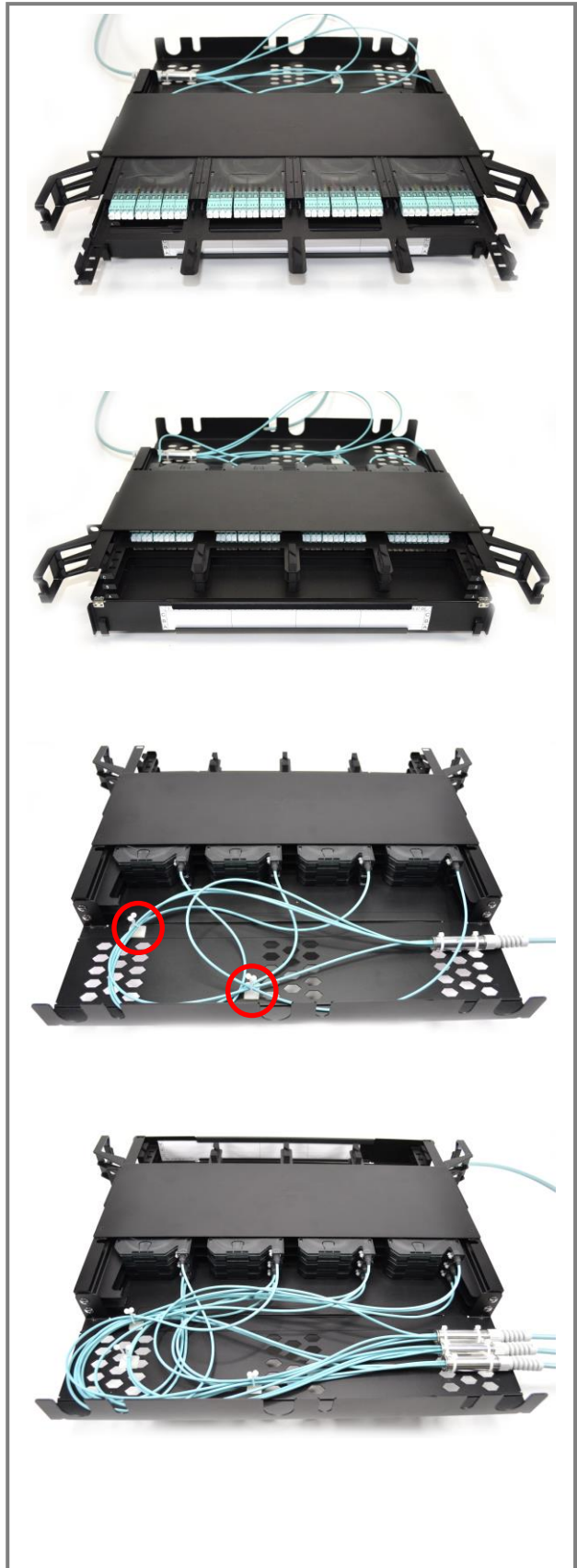
Repeat all steps with the next three modules on drawer "C".

Push drawer "C" back into the patch panel.

Turn the patch panel to the back side and install twisters on the recommended positions and resolve the cable management as shown in the picture.

Repeat all steps for the next two drawers "B" and "A".

The LC trunk cable installation is now finished.



## Installation Guide IG-FOI-010

You can use the **spiral tubes** to neatly manage the cables.

Now you can continue with the LC front patching installation.

Use the document: **IG-FOI-009** LC front patching cable installation for VERTEX patch panel



**For more information, contact our sales team at [sales@sylex.sk](mailto:sales@sylex.sk)**