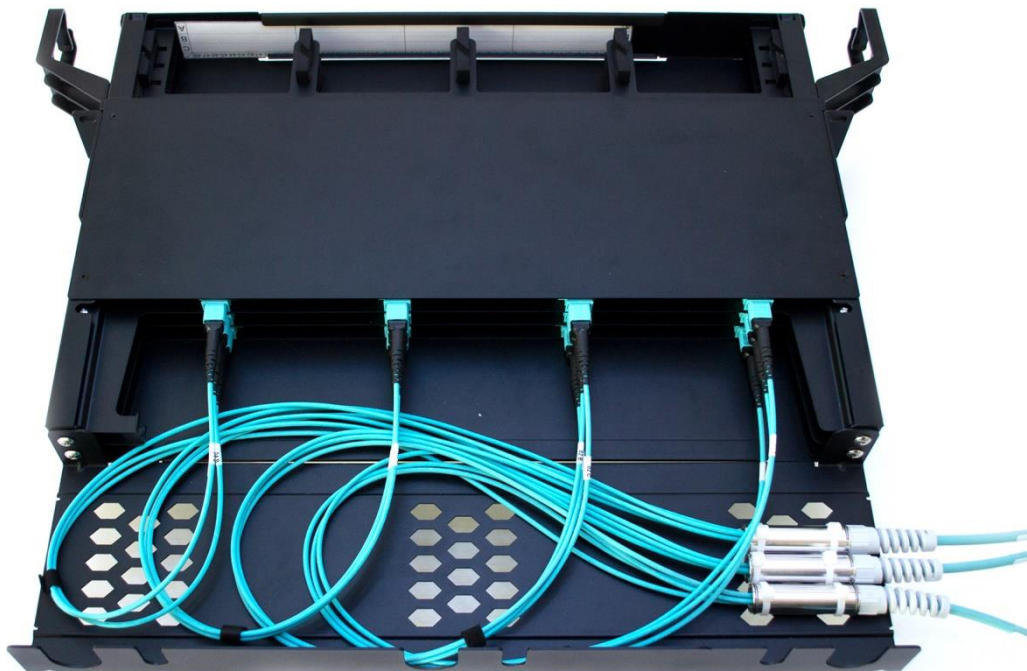


MTP multi-fibre trunk cable installation for VERTEX patch panel

This installation guide describes the method of installing MTP trunk cable (N x MTP) into the SYLEX VERTEX panel system.



Contents:

1. Assembly and installation of MTP-LC modules into 1U 19" VERTEX panel
2. 12x MTP trunk cable installation into 1U VERTEX panel – cable tie fixation
3. 12x MTP trunk cable installation into 1U VERTEX panel – grommet fixation

Installation Guide IG-FOI-008

1. Assembly and installation of MTP-LC modules into 1U 19" VERTEX panel

Unpack the 1U HD patch panel and the accessories (saddles, back management plate and screws) from the packaging.

Mount the saddles on the left and right side of the patch panel.

Tools and materials used:

1x Screwdriver

4x Screw M3 x 4mm

4x Washer



Installation Guide IG-FOI-008

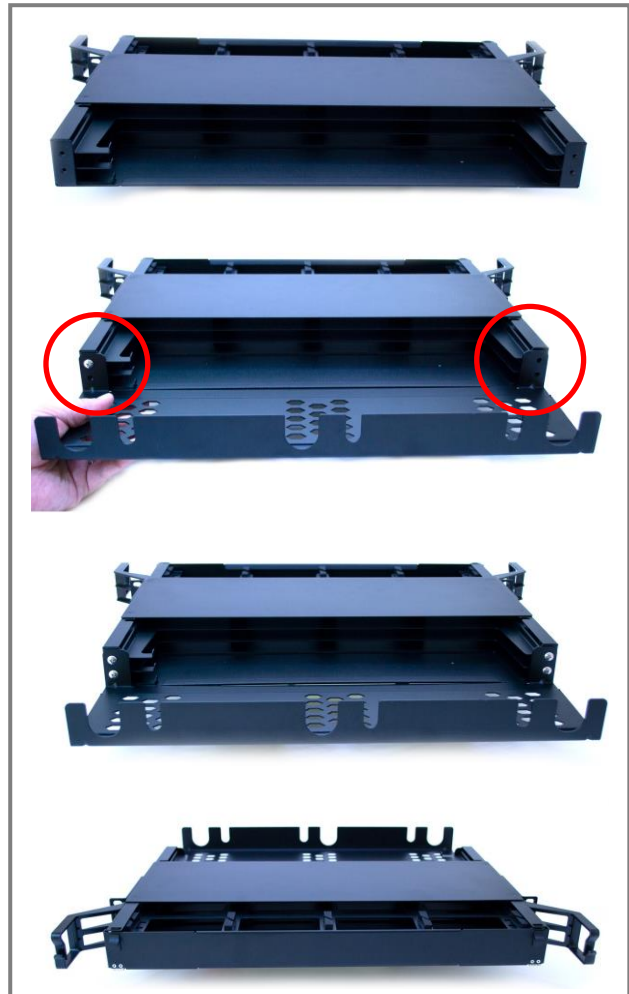
Turn the patch panel to the back side.

Mount the back management plate.

Tools and materials used:

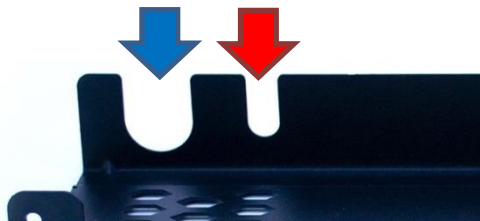
1x Screwdriver

4x Screw M4x7mm



Additional panel information:

There is a cut-out for cable entry on both sides of the panel. Through each cut-out, you can install:



Cut-out	Duralino with grommet	Suitable for thread	Hole diameter
1. Blue	1x Duralino XL or Multi-hole cable gland	M20 / PG13 or M25	Ø25mm
2. Red	2x Duralino S or 1x Duralino L	M12 / PG7	Ø12mm

Installation Guide IG-FOI-008

Open the front door of the patch panel.

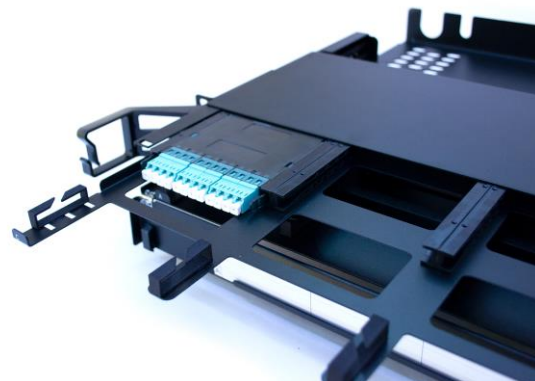
Pull out the first drawer "A" and insert the first HD Plug & Play module.

Insert the second HD Plug & Play module.

Equip the entire drawer "A" and put the drawer back inside of the patch panel.

Repeat the above-mentioned steps with drawers "B" and "C".

The panel is ready for MTP backbone cable installation.



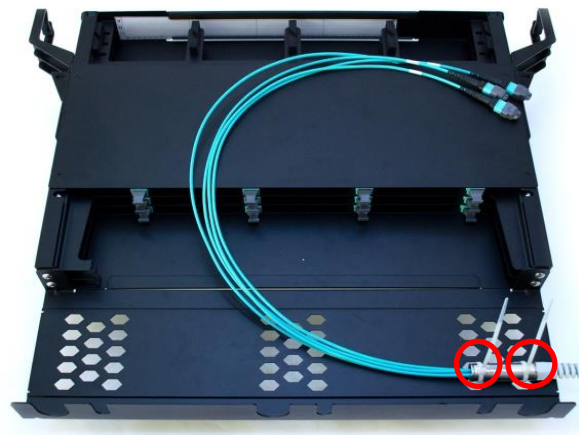
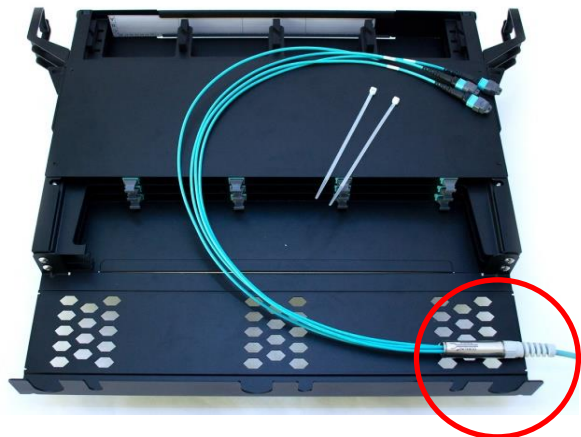
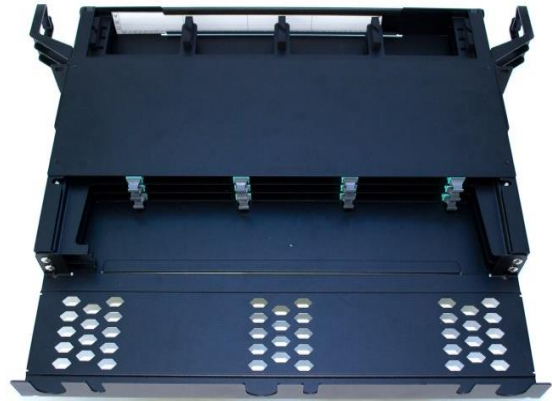
Installation Guide IG-FOI-008

2. Installation of three batches of 4x MTP(12 fiber) trunk cables into 1U VERTEX panel – cable tie fixation

Prepare MTP trunk cable for installation.

Place the Duralino fanout in the correct position on the back management plate.

Affix the Duralino fanout to the back management plate with 2 cable ties.



Installation Guide IG-FOI-008

Trim off the excess lengths of the cable ties.

Now we can start with the insertion of the MTP connectors into the HD Plug & Play modules.

Remove the dust cap from the first bottom-right module.

Use the MTP adaptor cleaning tool to clean the MTP adaptor.

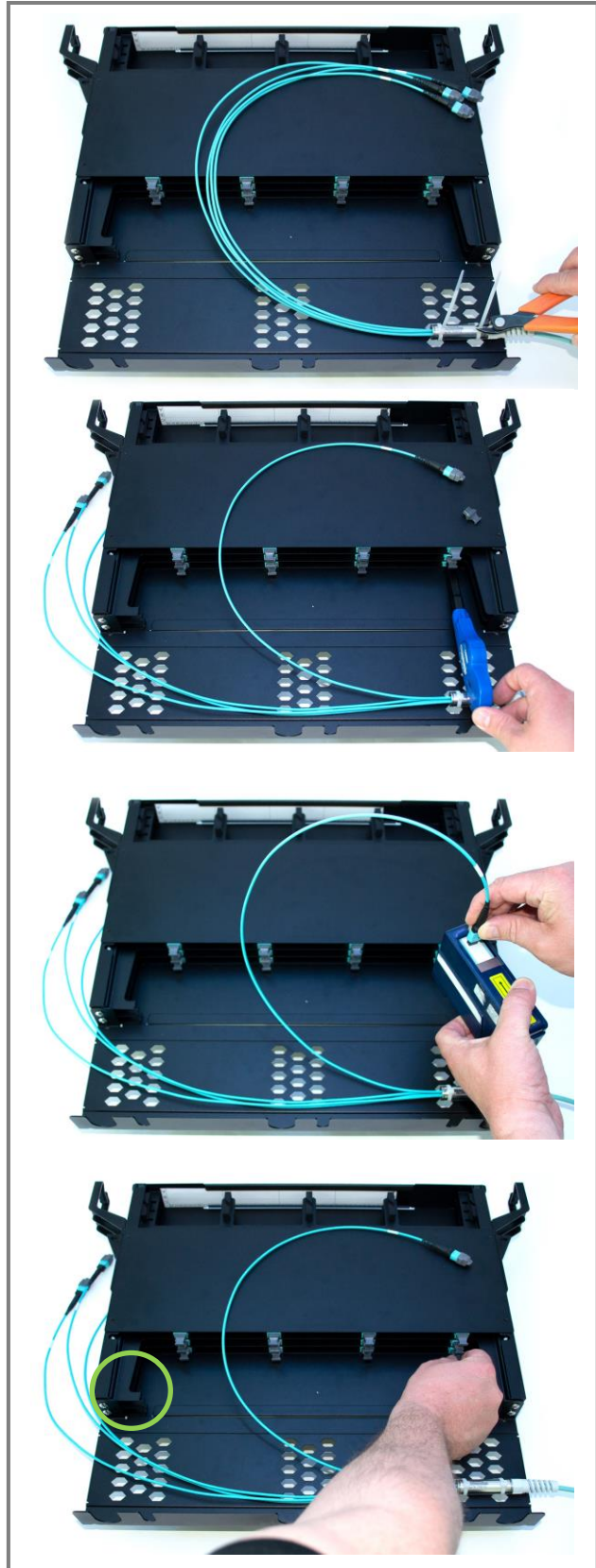
Remove the dust cap from MTP connector No.1 and clean the MT ferrule with the cleaning tool.

Note: Read Installation guide IG-FOI-000 Optical Connector cleaning procedure

Insert the MTP connector into the MTP adaptor.

The first module is now connected.

Drawer holders. Use if the front doors of the patch panel are open to prevent movement of the drawer.



Installation Guide IG-FOI-008

Repeat the above-mentioned steps with each of the next three connectors and modules.

The bottom row (drawer "C") is now connected.

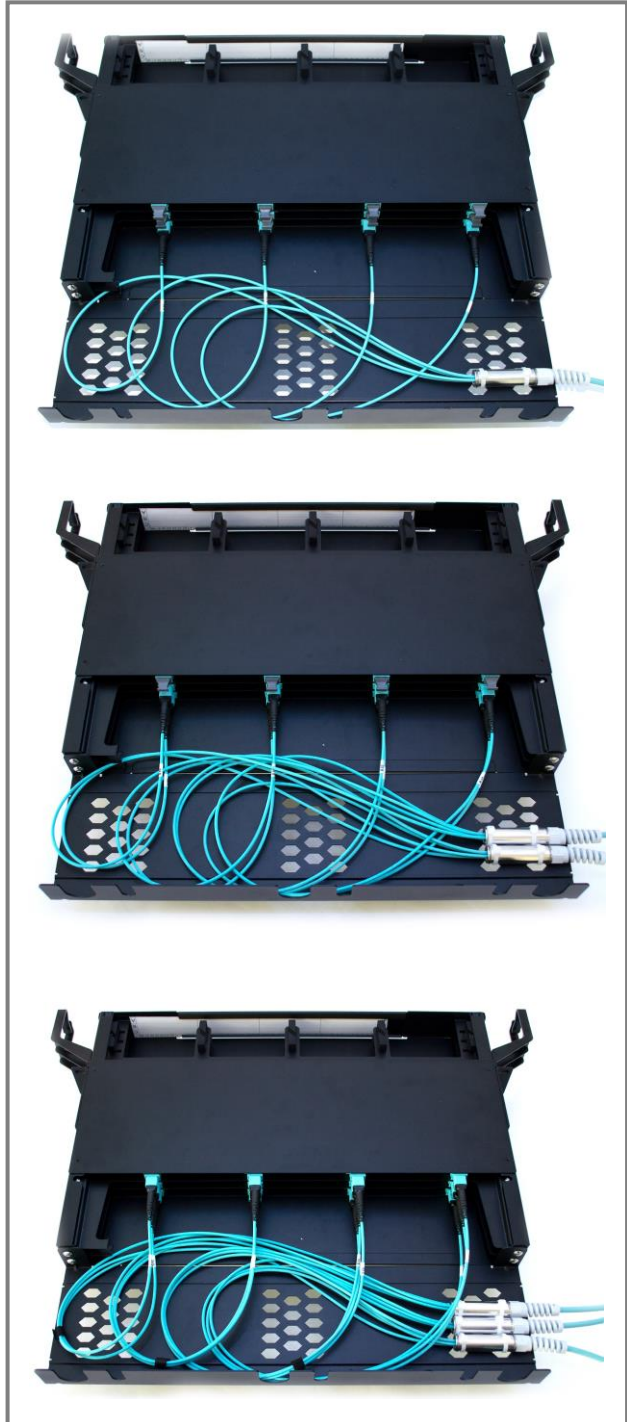
Take the second cable and repeat all steps with drawer "B".

Take the third cable and repeat all steps with drawer "A".

The MTP backbone cable installation is now finished.

Now you can continue with the LC front patching installation.

Use the document: **IG-FOI-009** LC front patching cable installation for VERTEX



Installation Guide IG-FOI-008

3. Installation of three batches of 4x MTP(12 fiber) trunk cables into 1U VERTEX panel – grommet fixation

Install the plastic twister into the recommended position.

Prepare MTP trunk cable for installation.

Partially unscrew the grommet from the Duralino fanout.

Slide the Duralino fanout into the panel cut-out on the left. Fasten the fanout grommet.

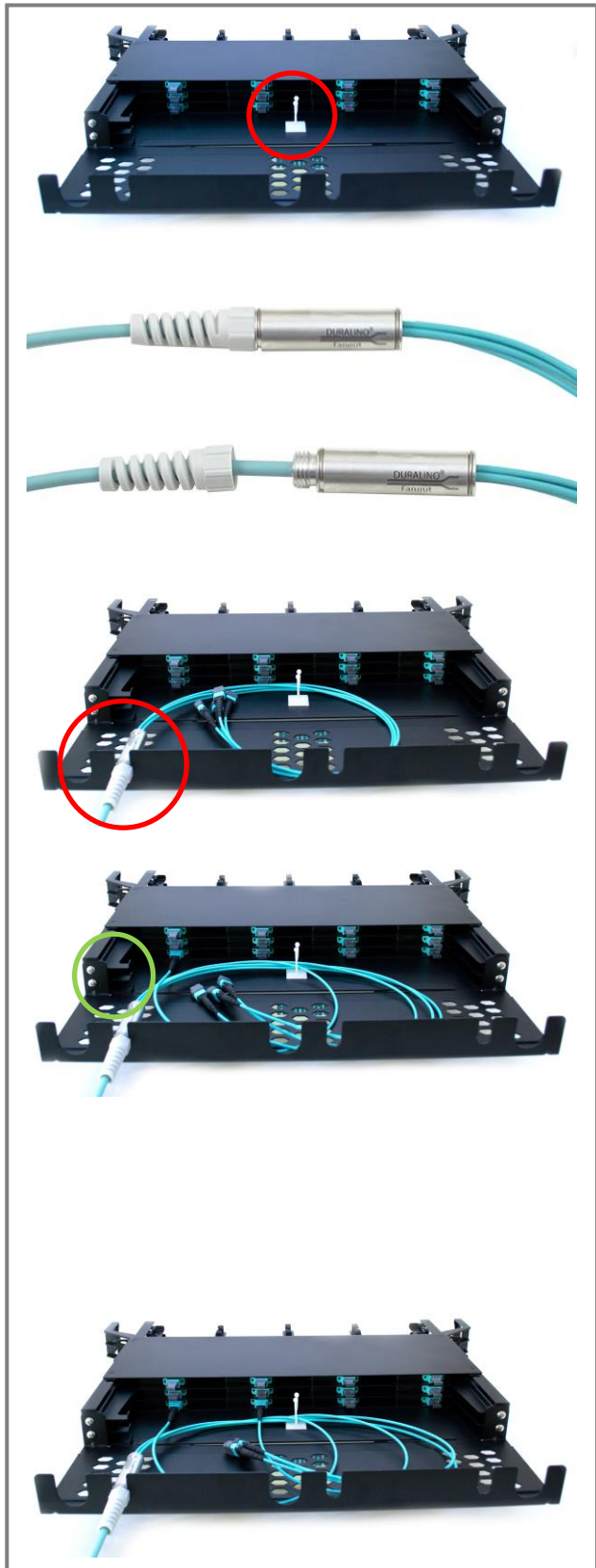
Plug MTP connector No.1 into the first HD Plug & Play module.

Don't forget to use the recommended cleaning tools for the MTP connector and MTP adaptor.

Note: Read Installation guide IG-FOI-000 Optical Connector cleaning procedure

Drawer holders. Use if the front doors of the patch panel are open to prevent movement of the drawer.

Plug MTP connector No.2 into the second HD Plug & Play module.



Installation Guide IG-FOI-008

Plug MTP connector No.3 into the second HD Plug & Play module.

Plug MTP connector No.4 into the second HD Plug & Play module.

The first drawer "C" is now completely connected.

Take the second cable and repeat all steps with drawer "B"

Take the third cable and repeat all steps with drawer "A"

The MTP backbone cable installation is now finished.

Now you can continue with the LC front patching installation.

Use document: **IG-FOI-009** LC front patching cable installation for VERTEX patch panel.

