

## SAT-01 Single Axis Tiltmeter

### Basic characteristic

- ▲ Fiber Bragg Grating based single-axis tilt meter, specifically designed to measure long term angular variations of large structures.
- ▲ The highly sensitive fiber optic tiltmeter has an angular measurement range of 10° and is temperature compensated to ensure high stability.



### Benefits

- ▲ Robust stainless steel
- ▲ Double-ended
- ▲ Temperature-compensated
- ▲ Large angular range
- ▲ High sensitivity

### Applications

- ▲ Tilt changes detection
- ▲ Can be mounted on different surfaces including walls, etc.

### Performance properties

Measurement range	-5deg. to +5deg.
Accuracy (typical) <sup>1)</sup>	1% F.S. <sup>2)</sup>
Resolution	8,33.10 <sup>-6</sup> deg.
Sensitivity	550 pm/deg. ± 50 pm/deg.
Response time	<3 sec.
Operating Temperature range	-20°C to +60°C
Ingress Protection rating	IP 67

<sup>1)</sup> Accuracy is established for each sensor under laboratory conditions and it includes hysteresis, non-linearity, and repeatability of the sensor

<sup>2)</sup> FS: full-scale range

## SAT-01 Single Axis Tiltmeter

### Physical properties

Housing material	1.4404 (SS 316L)
Anchoring bolts	M5 / 5Nm
Dimensions (without cable) <sup>1)</sup>	75 x 32 x 120 mm
Weight (without cable)	1500g
Cable type	3mm reinforced cable
Cable length <sup>2)</sup>	1mtr
Cable Bend Radius (dynamic)	40mm
Cable Bend Radius (static)	30mm
Connector type <sup>3)</sup>	FC/APC
Mounting method	Screws, glue, or spot welding

<sup>1)</sup> For further dimensions details see the product drawing (Figure 2)

<sup>2)</sup> Cable length is extendable on request

<sup>3)</sup> Other connector types available on request

### Packaging

Cardboard box with dimensions: 370x290x45mm

### Quality statement

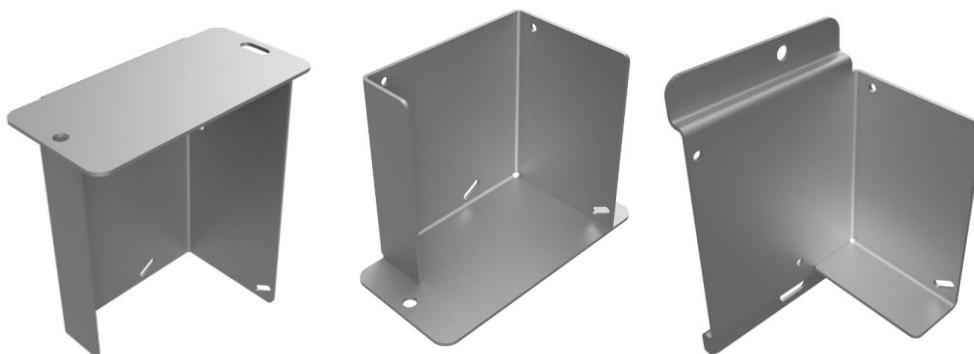
The sensor is compliant with IEC 61757-1-1:2016/Ed1.0 and IEC 61757:2018

All sensors are 100% tested and calibrated at SYLEX

The sensor is manufactured according to ISO 9001:2008 and ISO 14001:2004

### Optional accessories

- ▲ **WCP-01 Watertight connector protection** – used for FC/APC connector protection during the installation against dust and water – IP67 rated.
- ▲ **LCP-03 Longer cable pigtails** – used to extend the cable lengths from 1mtr up to 20mtr.
- ▲ **Optional brackets** - wall, floor, and ceiling bracket (more information available on request, Figure 1).



**Figure 1:** Possible mounting brackets configuration (wall, floor, and ceiling).

SAT-01 Single Axis Tiltmeter

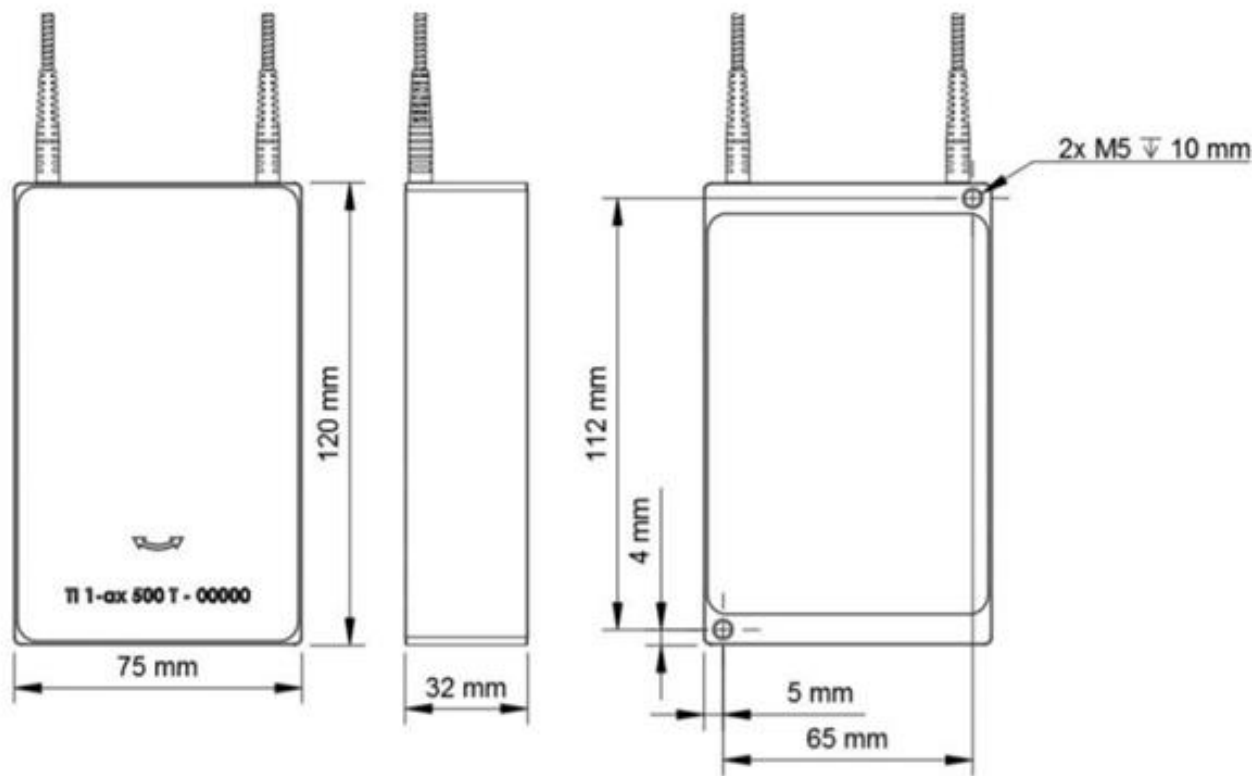


Figure 2: Dimensional drawing of the SAT-01.

For more information contact our sales team at [sales@sylex.sk](mailto:sales@sylex.sk)

\* Specifications are subject to change without notice