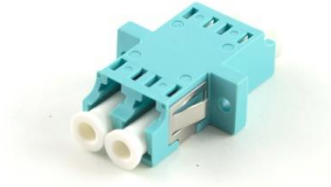


LC adapter

Basic characteristic

- ▲ LC duplex or quad adapter is available with or without flange in different color versions
- ▲ Compact design



Applications

- ▲ Telecom / Datacom
- ▲ CATV, FTTX

Temperature range	
Operating Temperature	-40°C to +85°C
Mechanical characteristics	
Mechanical resistance	100-300g
Optical characteristics	
Insertion Loss	≤0,2dB
Repeatability	<0,2dB (500 times)
Identification	
	N/A
Packaging	
	Cardboard box.

* Specifications are subject to change without notice

For more information contact our sales team at sales@sylex.sk