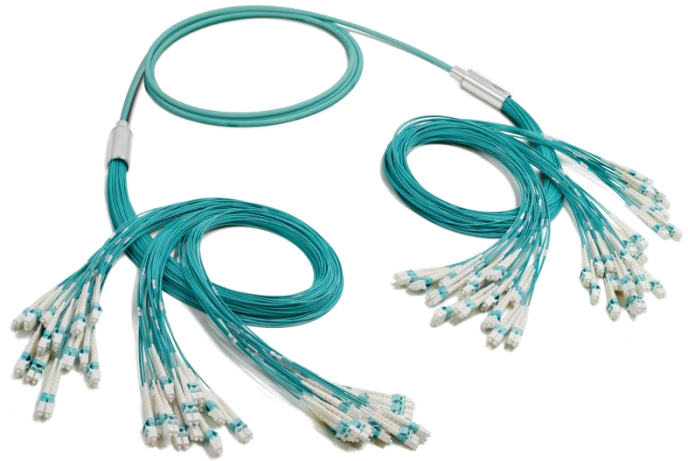


LC-LC 96-fiber Duralino trunk - Simplex

Basic characteristics

- ▲ Durable material
- ▲ Compact
- ▲ Light weight



Benefits

- ▲ Compact design of cable – outer diameter 7,5mm
- ▲ Durable metal fan-out

Applications

- ▲ DataCenter cabling
- ▲ Inside building interconnections
- ▲ Direct patching of ODFs

Temperature range

Controlled environment (-10°C/+60°C)

Cable parameters

| | | |
|--------------------|------------------------------|----------------|
| Jacket material | LSZH | |
| Cable construction | Micro-Bundle | |
| Outer diameter | 7,5mm | |
| Fiber count | 96 | |
| Fiber type | SM OS2 or MMF OM3/OM4/OM5 | |
| Temperature range | operation: | -10°C to +70°C |
| | storage: | -25°C to +70°C |
| | installation: | -5°C to +50°C |
| CPR | C _{ca} -s1a, d1, a1 | |

LC-LC 96-fiber Duralino trunk - Simplex

Connector parameters

| | LC SM | LC MM |
|---|---|--------------------------|
| Compliance | Telcordia GR-326 | Telcordia GR-326, |
| Color of housing | Blue (UPC)/Green (APC) | Aqua/Magenta/Lime Green |
| Color of boot | White (UPC) or Green (APC) | White |
| Polish | Flat (UPC) or Angled (APC) | Flat (PC) |
| Insertion Loss (acc. IEC 61300-3-4 method B) | <0,25dB (@1310/1550nm) | <0,25dB (@850/1300nm) |
| Return Loss (acc. IEC 61300-3-6) | >50dB (UPC)/>60dB (APC) (@1310/1550nm) | >30dB (@850/1300nm) |

Identification

Traceability label with unique serial number on both ends of cable assembly.

Packaging

Each assembly in plastic bag, bulk pack in cardboard box.
Longer lengths coiled on cardboard/wooden reel.

* Specifications are subject to change without notice

For more information contact our sales team at sales@sylex.sk