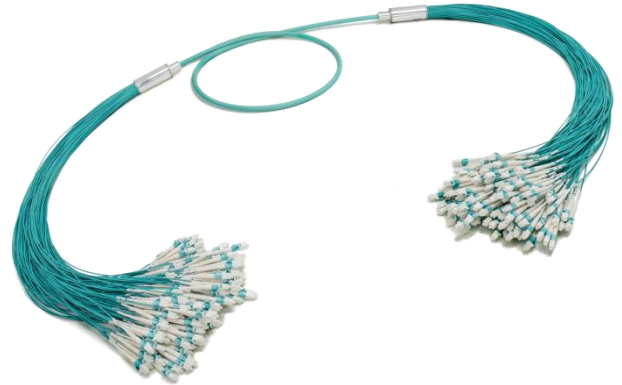


LC-LC 144-fiber Duralino trunk - Simplex

Basic characteristics

- ▲ Durable material
- ▲ Compact
- ▲ Light weight



Benefits

- ▲ Compact design of cable – outer diameter 8,9mm
- ▲ Durable metal fan-out

Applications

- ▲ DataCenter cabling
- ▲ Inside building interconnections
- ▲ Direct patching of ODFs

Temperature range

Controlled environment (-10°C/+60°C)

Cable parameters

Jacket material	LSZH	
Cable construction	Micro-Bundle	
Outer diameter	8,9mm	
Fiber count	144	
Fiber type	SM OS2 or MMF OM3/OM4/OM5	
Temperature range	operation:	-10°C to +70°C
	storage:	-25°C to +70°C
	installation:	-5°C to +50°C
CPR	C _{ca} -s1a, d1, a1	

LC-LC 144-fiber Duralino trunk - Simplex

Connector parameters

	LC SM	LC MM
Compliance	Telcordia GR-326	Telcordia GR-326
Color of housing	Blue (UPC)/Green (APC)	Aqua/Magenta/Lime Green
Color of boot	White (UPC) or Green (APC)	White
Polish	Flat (UPC) or Angled (APC)	Flat (PC)
Insertion Loss (acc. IEC 61300-3-4 method B)	<0,25dB (@1310/1550nm)	<0,25dB (@850/1300nm)
Return Loss (acc. IEC 61300-3-6)	>50dB (UPC)/>60dB (APC) (@1310/1550nm)	>30dB (@850/1300nm)

Identification

Traceability label with unique serial number on both ends of cable assembly.

Packaging

Each assembly in plastic bag, bulk pack in cardboard box.
Longer lengths coiled on cardboard/wooden reel.

* Specifications are subject to change without notice

For more information contact our sales team at sales@sylex.sk